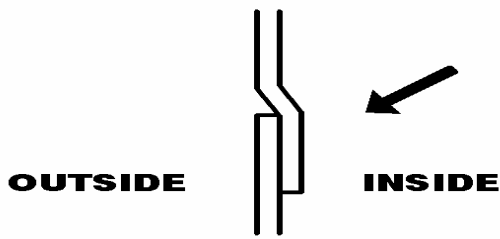


Oil Tight Chain Casings



Protection from outside elements and adequate lubrication are essential to maximize the life of roller chains, sprockets, and gears. Since 1964, Prairie State Industries/Litco has accumulated extensive experience in the manufacture of oil tight chain casings. Each and every chain casing is made with fully welded construction. 14 gauge material is recommended for cases with center distances thru 60", and 12 gauge material is recommended for center distances of 60" or more.

Manufacturers and Fabricators of Metal Products
Stainless Steel • Aluminum • Carbon Steel
1009 Tamarac Drive P.O. Box 399 Carpentersville, IL 60110
Phone: (847) 428-3641 Fax: (847) 428-4202 www.litcoinc.com



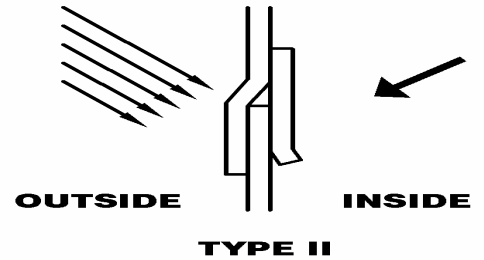
TYPE I

Type I Casing — Oil Tight

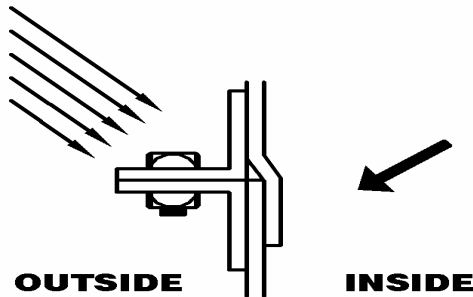
The Type I casing is used in indoor applications that are not exposed to outside infiltration of dust or water. The offset lip projects downward inside the lower casing to prevent oil loss at the parting line. Sealing at the shafts is effectively accomplished with a floating block of 1/4" neoprene impregnated cork, held with offset tracks welded inside the casing.

Type II Casing — Oil and Water Tight

The Type II casing is used in outdoor operations or where the plant machinery is washed down with water. Type II casings effectively prevent oil loss while protecting the chain and sprockets from external moisture. The double offset lip, sealed at the parting line with a neoprene strip, provides advanced protection against water infiltration. Sealing at the shafts is accomplished with a floating block of 1/4" neoprene impregnated cork, held with offset tracks welded inside the casing.



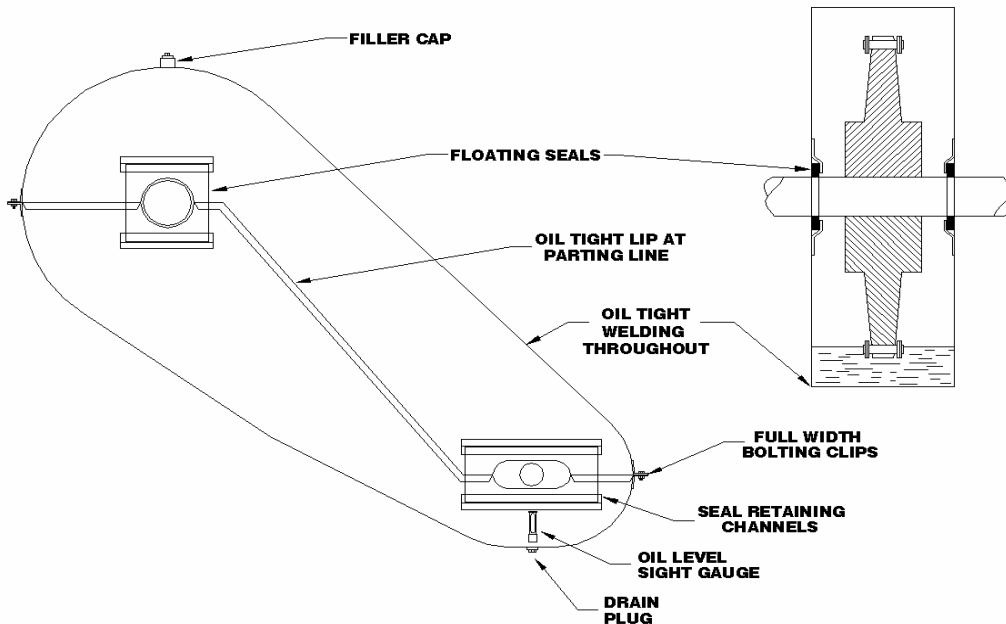
TYPE II



TYPE III

Type III Casing — Oil, Water and Dust Tight

Used in dusty operations where the plant machinery is exposed to continuous dust infiltration. The split line flanges are fabricated from steel angles for ultimate reinforcement, prevention of oil loss, and dust and water protection. Sealing at the split line is accomplished with a neoprene strip. Sealing at the shafts consists of a box type hat inside and outside, containing 1/4" neoprene impregnated cork seals.



Optional Accessories:

- Inspection doors
- Bolt-on shaft extensions for shear pin hubs
- Offset casings
- Oil dip sticks
- Lifting lugs
- Shaft sleeves to eliminate oil loss from open keyways
- Weld-on shaft extensions

Oil-Tight Casing Order Form

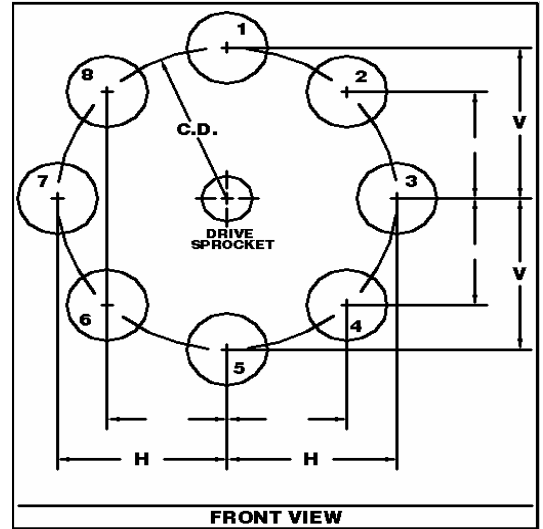
Customer _____
 Order/Drawing No _____

Date _____
 Quantity _____

Item	Description	Dimension
CD	Center Distance	
S	Driven sprocket O.D.	
	Bore Size of "S"	
S1	Drive sprocket O.D.	
	Bore Size of "S1"	
R	Casing radius-driven $(OD/2) + 2\ 1/2"$	
R1	Casing radius-drive $(OD/2) + 2\ 1/2"$	
W	Length of Longest Hub Plus 1-1/2" for Opening on One Side, 2" for Opening on Both Sides of Casing	
T	Take up - One Chain Pitch	
V	Vertical location	
H	Horizontal location	

SPROCKET POSITION DIAGRAM

1. Shade driven sprocket position.
2. Horizontal take up is standard. Note if different take up is required.



Casing Type	
Type I	
Type II	
Type III	
Other	

Material	
Carbon Steel	
Stainless Steel	
Aluminum	
Other	

Finish	
None	
Prime Paint	
Safety Yellow	
Other	

MARK CORRECT TOP VIEW OF CASING FOR REQUIRED SHAFT ARRANGEMENT

A

B

C

D

E

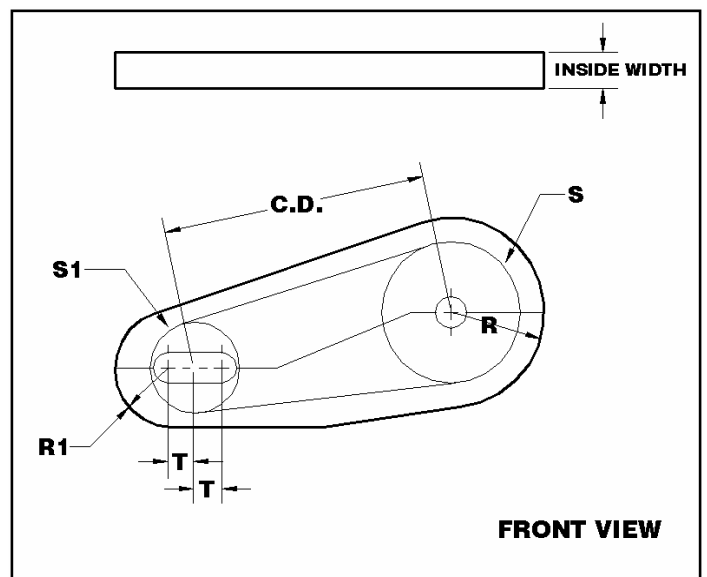
F

G

H

J

TOP VIEW



Welding Certifications

AWS: CWI #09081931

AWS: D1.1, D1.2, D1.6, D9.1

ASME B31 (Pressurized Piping)

Facilities And Equipment

<u>Facility</u> <ul style="list-style-type: none">• 28,000 sqft Fabricating facility• 2,000 sqft Office facility• Loading Docks – Flatbeds/Box Trucks	<u>Cranes</u> <ul style="list-style-type: none">• 10,000 # Overhead – 15' 6" Under hook• 10,000 # Overhead – 12' Under hook
<u>Press Brakes</u> <ul style="list-style-type: none">• Cincinnati – 230 Ton – 12' Bed – CNC Controlled• R&K – 20 Ton – 8' Bed	<u>Shears</u> <ul style="list-style-type: none">• HTC – ¼" Plate – 10' Long• Betenbender – ½" Plate – 6' Long
<u>Punches/Drills</u> <ul style="list-style-type: none">• GEKA 55 Ton Iron Worker• Midwest 55 Ton Iron Worker• Asquith 5' Radial Arm Drill	<u>Rollers</u> <ul style="list-style-type: none">• Roundo – 3/8" x 8' Long• Roundo – 3/16" x 4' Long• Pullmax Angle Roller
<u>Plasma Cutters</u> <ul style="list-style-type: none">• MG Plasma Cutting Table -- 6' x 22' Bed, 2" Capacity – CNC Controlled• Hyper -Therm Hand Plasma, ½" Capacity	<u>Welders</u> <ul style="list-style-type: none">• Tig Welders – 300 Amp Capacity – Stainless and Aluminum• Mig Welders – 200 to 600 Amp Capacity
<u>Paint Booth</u> <ul style="list-style-type: none">• Spray Booth With Filter Exhaust System• Portable Electrostatic Spray System	<u>Design</u> <ul style="list-style-type: none">• AutoCad Mechanical 2009• Autodesk Inventor 2009 (3D Capability)• Hewlett Packard Plotter – 36" Wide

Manufacturers and Fabricators of Metal Products

Stainless Steel • Aluminum • Carbon Steel

1009 Tamarac Drive P.O. Box 399 Carpentersville, IL 60110

Phone: (847) 428-3641 Fax: (847) 428-4202 www.litcoinc.com

LITCO · Machinery Guards · Chain Casings

