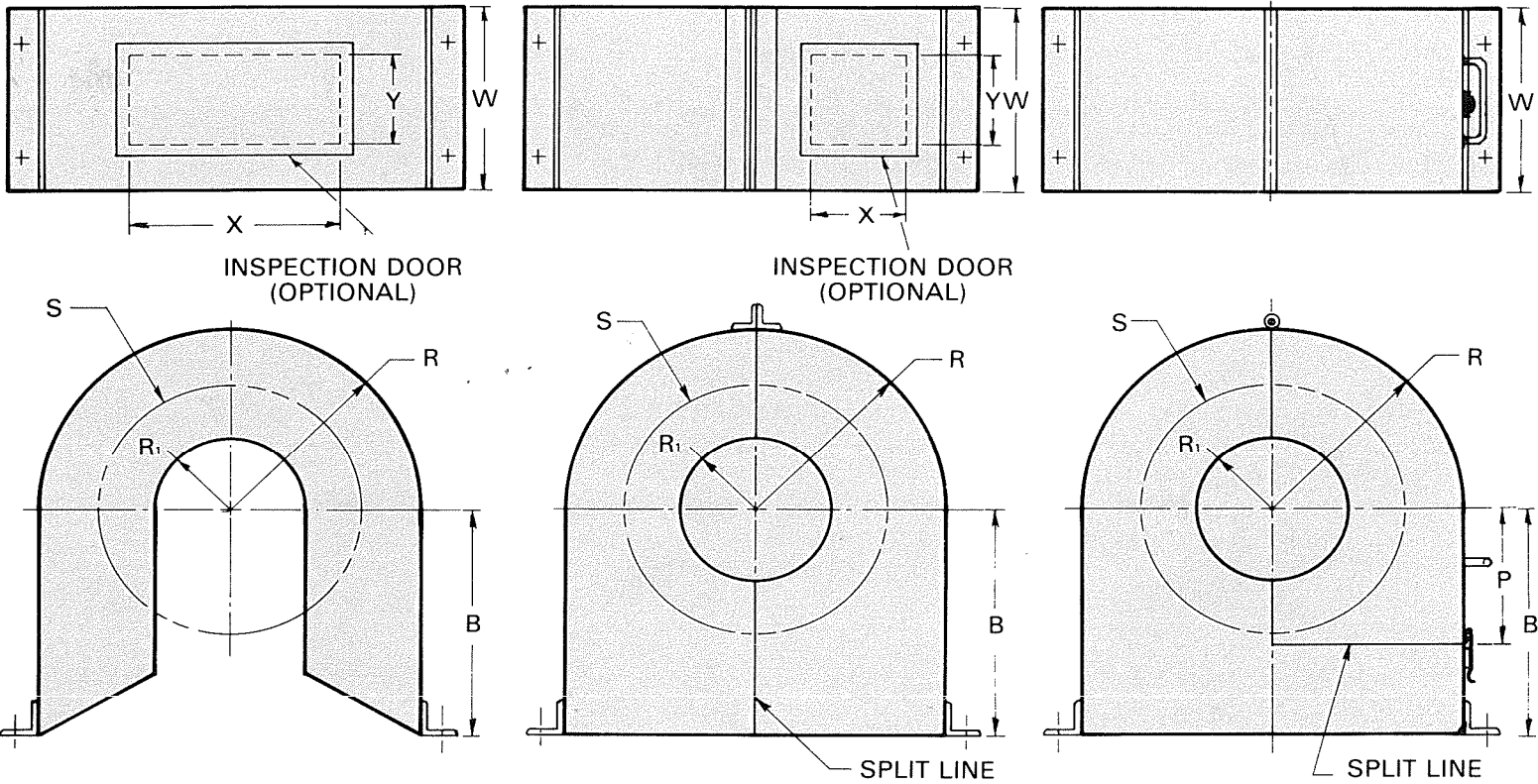


Coupling Guards



INSPECTION DOOR (OPTIONAL)

INSPECTION DOOR (OPTIONAL)

TYPE I

TYPE II

TYPE III

- Most economical
- Used to cover rotating shafts and couplings where there is no access to the slotted hole in the guard
- Inspection door can be provided as an optional feature

- Totally enclosed protection
- Conforms with OSHA safety standards
- Two piece construction allows access for maintenance or repair
- Inspection door can be provided as an optional feature

- Maximum protection
- Quick, easy access
- Convenient hinged door with handle
- Easy opening latch

Customer			Order #			Quantity		
Type I <input type="checkbox"/>			Type II <input type="checkbox"/>			Type III <input type="checkbox"/>		
Date			Insp. Door			Yes No		
ITEM	DESCRIPTION	DIM.	ITEM	DESCRIPTION	DIM.			
S	Coupling O.D.		B	Base to Shaft Centerline				
	Largest Bore Size of S		P	Type III Only				
R	Coupling O.D. ÷ 2 + 2		X	Length of Opening				
R ₁	Bore Size ÷ 2 + 1/4"		Y	Width of Opening				
W	Width of Coupling + 1 1/2"							

